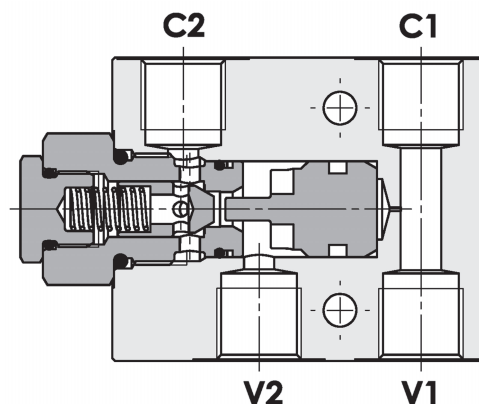
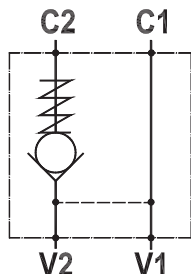


Valvola di blocco pilotata semplice, montaggio in linea
Single pilot operated check valve, line mounted

Rev.01-2010/02



SPECIFICHE TECNICHE

Materiali: corpo in alluminio (a richiesta in acciaio). I componenti interni sono in acciaio trattato termicamente.

Portata: fino a 85 l/min

Pressione max.: vedi tabella pag.2

Pressione di apertura: standard 2,5 bar, a richiesta 5-10 bar

TECHNICAL SPECIFICATIONS

Materials: body in aluminum (steel on request). Internal components in hardened steel.

Rated flow: up to 85 l/min

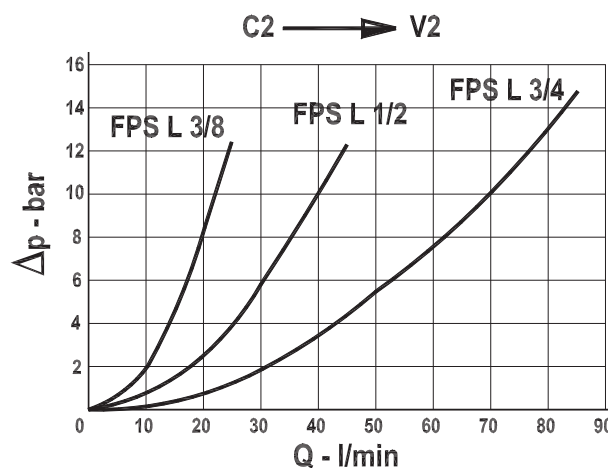
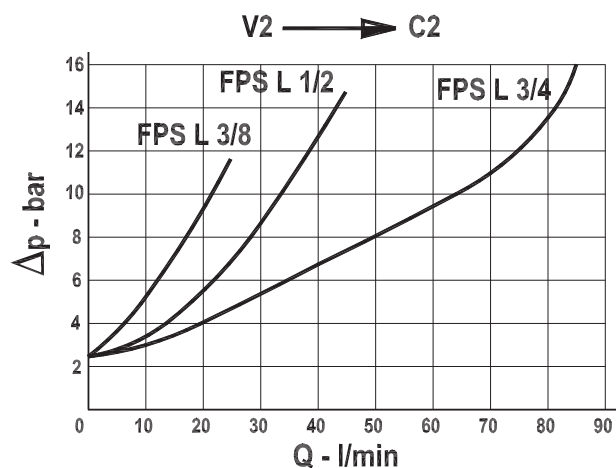
Max. pressure: see data sheet page 2

Cracking pressure: 2,5 bar standard, 5-10 bar on request

DIAGRAMMA PERDITE DI CARICO - PRESSURE DROP CURVES

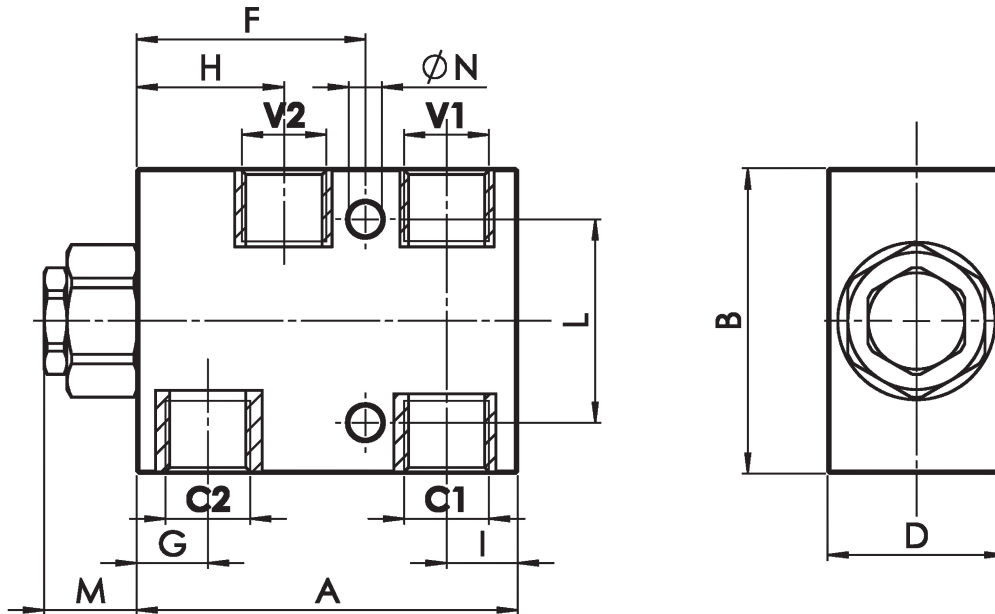
Viscosità olio 24 mm²/sec. (3,5 °E)
 Temperatura 50 °C

Oil viscosity 24 mm²/sec. (3,5 °E)
 Temperature 50 °C



Valvola di blocco pilotata semplice, montaggio in linea
Single pilot operated check valve, line mounted

Rev.01-2010/02



TIPO TYPE	PORTATA MAX. FLOW	PRESSIONE MAX. PRESSURE	V1-C1 V2-C2	A	B	D	F	G	H	I	L	M	N	RAPP. DI PILOTAGGIO PILOT RATIO	PESO WEIGHT
	L/MIN	BAR	BSPP	mm	mm	mm	mm	mm	mm	mm	mm	mm	mm		Kg
FPS L 3/8"	30	250 - 350(S)	3/8"	75	60	35	45	14	29	14	40	18.5	6.5	1 : 7	0.480 - 1.110(S)
FPS L 1/2"	45	250 - 350(S)	1/2"	95	70	35	55	21	38	19	40	15	8.5	1 : 3.5	0.620 - 1.530(S)
FPS L 3/4"	85	250 - 350(S)	3/4"	135	90	50	80	30	57.5	22	50	14	10.5	1 : 4	1.650 - 4.050(S)

Queste valvole, data la loro configurazione, non consentono una elevata contropressione allo scarico
 These valves, owing to their configuration, can't allow for an high discharge pressure

ESEMPIO DI ORDINAZIONE - ORDERING CODE EXAMPLE

F P S L	3 / 8	2 , 5	G	*	*
3/8 - 3/8" BSPP					
* 1/2 - 1/2" BSPP					
3/4 - 3/4" BSPP					
Conessioni - Port sizes					
2.5 bar (std) - 5 bar - 10 bar					
* Pressione apertura ritegno, omettere se std					
Cracking pressure, omit if std					
					Guarnizioni - Seals: V=Viton *
					Omettere se BUNA-N - Omit if BUNA-N
					Materiale corpo: omettere se alluminio, S=acciaio *
					Body material: omit if aluminum, S=steel
					Guarnizione sul pilota, omettere se non richiesta *
					With o-ring on pilot valve, omit if not requested