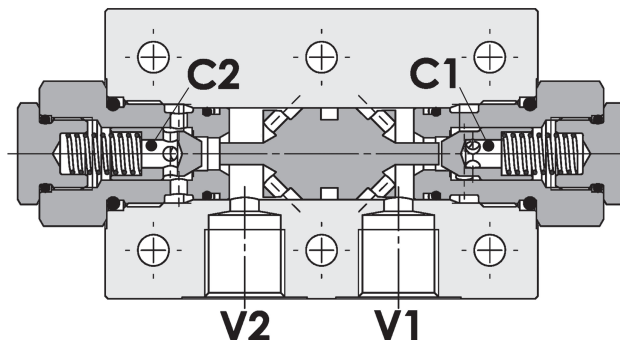
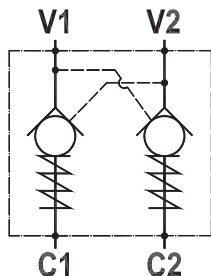


Valvola di blocco pilotata doppia, montaggio a flangia
Double pilot operated check valve, gasket mounted

Rev.01-2010/02



SPECIFICHE TECNICHE

Materiali: corpo in alluminio, a richiesta in acciaio. I componenti interni sono in acciaio trattato termicamente e rettificati.

Portata max.: fino a 85 l/min

Pressione max.: vedere tabella pag. 02

Pressione di apertura: standard 2.5 bar, a richiesta 5-10 bar

TECHNICAL SPECIFICATIONS

Materials: std body is in aluminium, steel body on request. Internal parts are in hardened and ground steel.

Rated flow: up to 85 l/min

Max. pressure: see data sheet page 02

Cracking pressure: 2.5 bar standard, 5-10 bar on request

DIAGRAMMA PERDITE DI CARICO - PRESSURE DROP CURVES

Viscosità olio 24 mm²/sec. (3,5 °E)
 Temperatura 50 °C

Oil viscosity 24 mm²/sec. (3,5 °E)
 Temperature 50 °C

