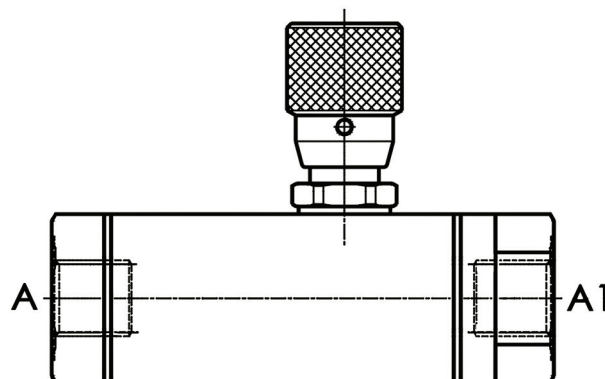
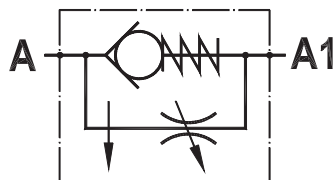


Valvola regolatrice di flusso unidirezionale compensata
Compensated flow control valve

Rev.01-2010/02



SPECIFICHE TECNICHE

Materiali: corpo e parti interne in acciaio. La superficie esterna è protetta mediante zincatura.

Portata max.: 18 l/min

Pressione max.: 250 bar, vedasi tabella a parte

TECHNICAL SPECIFICATIONS

Materials: body and internal parts are steel made. External surface zinc plated.

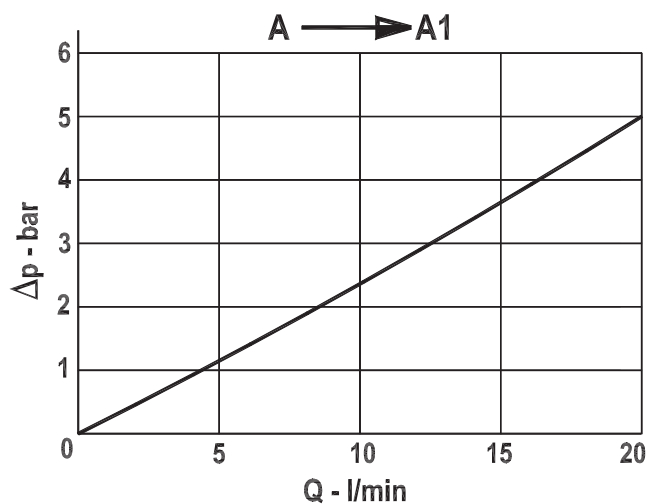
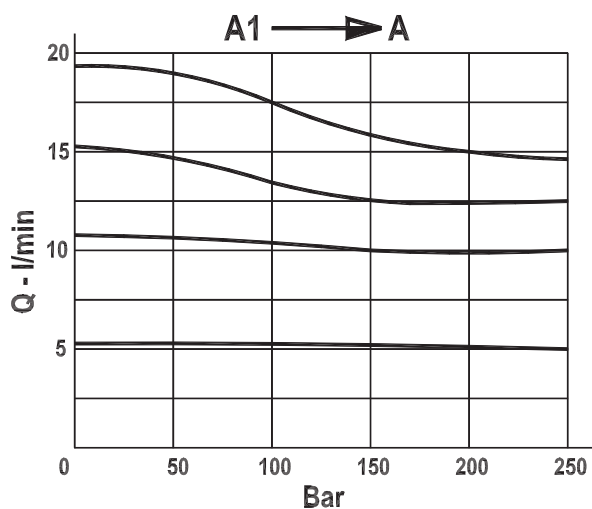
Rated flow: 18 l/min

Max. pressure: 250 bar, see data sheet

DIAGRAMMA PERDITE DI CARICO E COMPENSAZIONE - PRESSURE DROP AND COMPENSATION CURVES

Viscosità olio 24 mm²/sec. (3,5 °E)
 Temperatura 50 °C

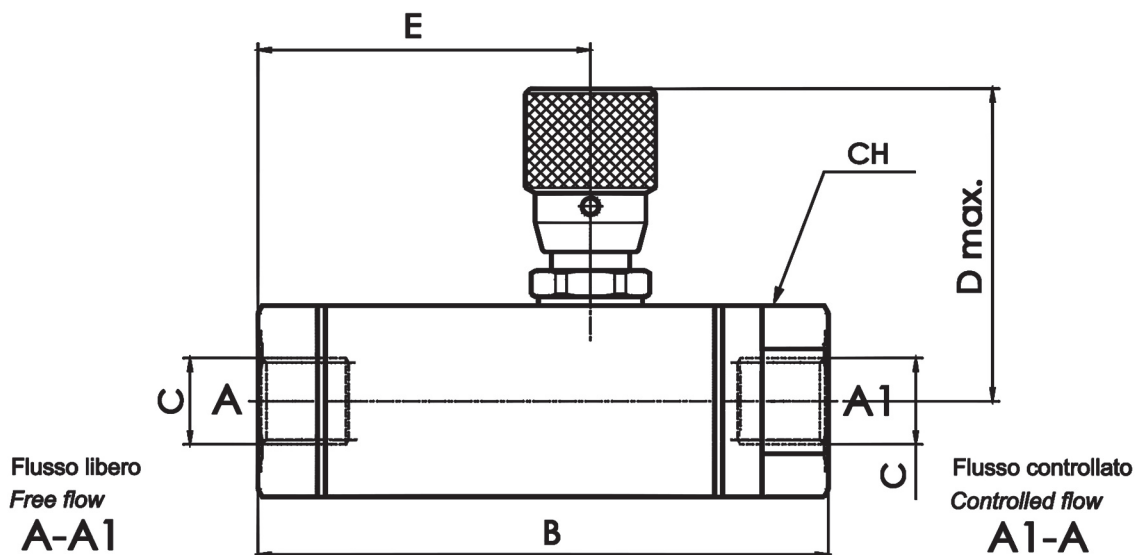
Oil viscosity 24 mm²/sec. (3,5 °E)
 Temperature 50 °C





Valvola regolatrice di flusso unidirezionale compensata
Compensated flow control valve

Rev.01-2010/02



| TIPO TYPE | PORTATA MAX. MAX. FLOW | PRESSIONE MAX. MAX. PRESSURE | B mm | C BSPP | D mm | E mm | CH mm | PESO WEIGHT Kg |
|--------------|---------------------------|---------------------------------|---------|-----------|---------|---------|----------|----------------------|
| | l/min | bar | | | | | | |
| FPCU 1/4 | 10 | 250 | 88 | 1/4" | 56 | 51 | 27 | 0.340 |
| FPCU 3/8 | 18 | 250 | 88 | 3/8" | 56 | 51 | 27 | 0.320 |

ESEMPIO DI ORDINAZIONE - ORDERING CODE EXAMPLE

F P C U **3 / 8**

1/4 - 1/4" BSPP

* 3/8 - 3/8" BSPP

Connessioni - Port sizes