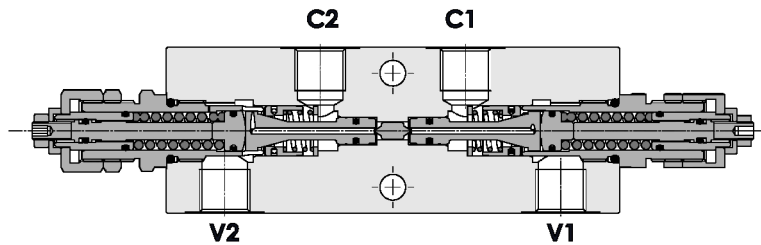
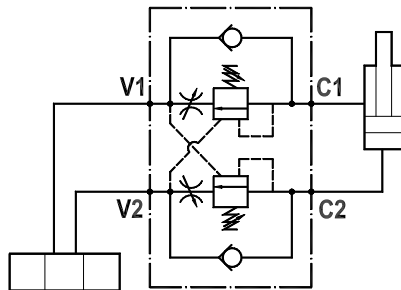




Valvola overcenter doppia, montaggio in linea, portata regolabile
Dual overcenter valve, line mounted, adjustable flow

Rev.03-2022/08



SPECIFICHE TECNICHE

Materiali: corpo in acciaio zincato. I componenti interni sono in acciaio trattato termicamente.

Portata max.: 50 l/min

Taratura max.: 350 bar

Rapporto di pilotaggio: 1 : 4.25 (a richiesta 1 : 8)

Regolazione pressione: mediante vite

Campo di regolazione pressione: vedere pag. 02

TECHNICAL SPECIFICATIONS

Materials: body is steel made zinc plated. Internal parts are in hardened steel.

Rated flow: up to 50 l/min

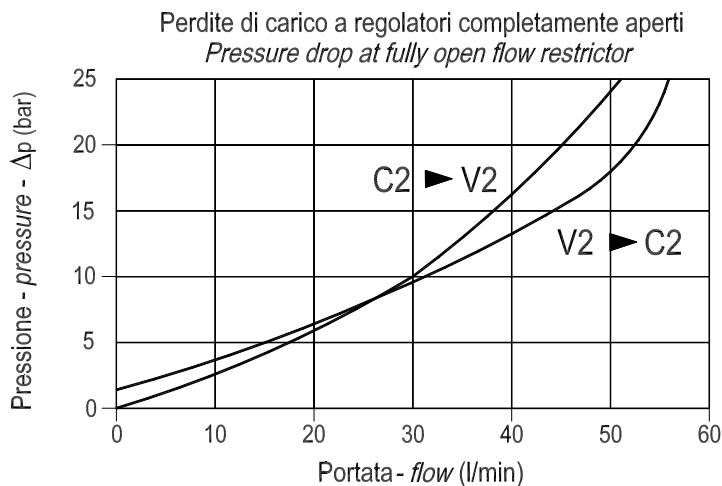
Max. setting: 350 bar

Pilot ratio: 1 : 4.25 (1 : 8 on request)

Adjustment pressure: leakproof screw

Adjustable pressure range: see page 02

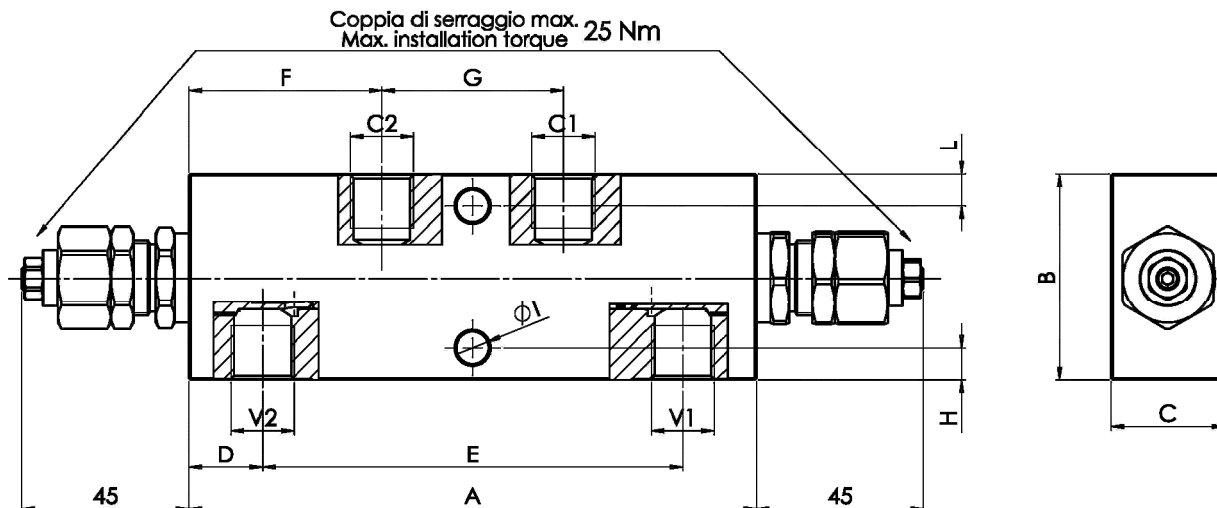
DIAGRAMMA PERDITE DI CARICO PRESSURE DROP CURVES





Valvola overcenter doppia, montaggio in linea, portata regolabile
Dual overcenter valve, line mounted, adjustable flow

Rev.03-2022/08



MOLLE - SPRINGS				*
Codice Code	Rapp. pil. Pilot ratio	Campo taratura min.-max. bar Adjustable pressure range bar	Increment. press. bar/giro vite Pressure increase bar/turn	Taratura standard bar Standard setting bar
20	1 : 4.25	60 - 210	105	170
	1 : 8	60 - 220	75	
35	1 : 4.25	80 - 350	160	280
	1 : 8	100 - 350	120	

TIPO TYPE	V1-C1 V2-C2	A	B	C	D	E	F	G	H	I	L	PESO WEIGHT
	BSPP	mm	mm	mm	mm	mm	mm	mm	mm	mm	mm	Kg
FPOA 50 D-3/8-L	3/8"	150	55	30	19.5	111	51	48	8.5	8.5	8.5	2,000
FPOA 50 D-1/2-L	1/2"	150	65	35	19	112	51	48	11	8.5	11.5	2,600

ESEMPIO DI ORDINAZIONE - ORDERING CODE EXAMPLE

F P O A **5 0** **D** **1 / 2** **L** **2 0** **B** *****

3/8 . 3/8" BSPP
 * 1/2 . 1/2" BSPP
 Connessioni - Port sizes

* 20+ / 35+
 Campi di taratura pressione - Adjustable pressure range

Guarnizioni . Seals:
 V=Viton *
 Omettere se BUNA-N
 Omit if BUNA-N

Rapporto di pilotaggio . Pilot ratio
 Omettere se standard . Omit if standard *
 B = 1 : 8