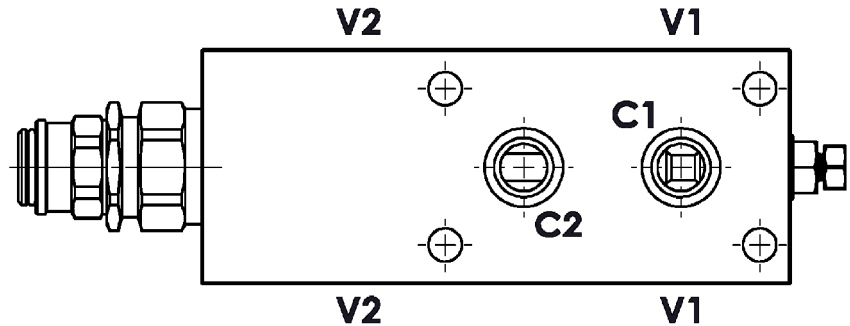
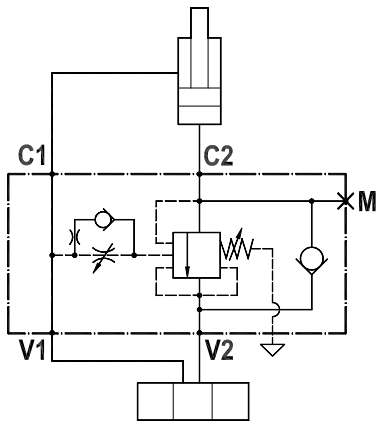




**Valvola overcenter singola bilanciata, montaggio con C1, C2 flangiata e pilotaggio interno e regolabile**  
**Fully balanced single overcenter valve, gasket mounted: C1-C2 flanged, internal and adjustable pilot**

Rev.04-2022/08



### SPECIFICHE TECNICHE

**Materiali:** corpo in acciaio, protetto mediante zincatura. I componenti interni sono in acciaio trattato termicamente.

**Portata:** fino a 150 l/min

**Taratura max.:** 350 bar

**Rapporto di pilotaggio:** 1 : 4 (a richiesta 1 : 8)

**Regolazione pressione:** mediante vite

**Campo di regolazione pressione:** veder pag. 02

### TECHNICAL SPECIFICATIONS

**Materials:** body is steel made. Internal parts are in hardened steel.  
External surface: zinc plated.

**Rated flow:** up to 150 l/min

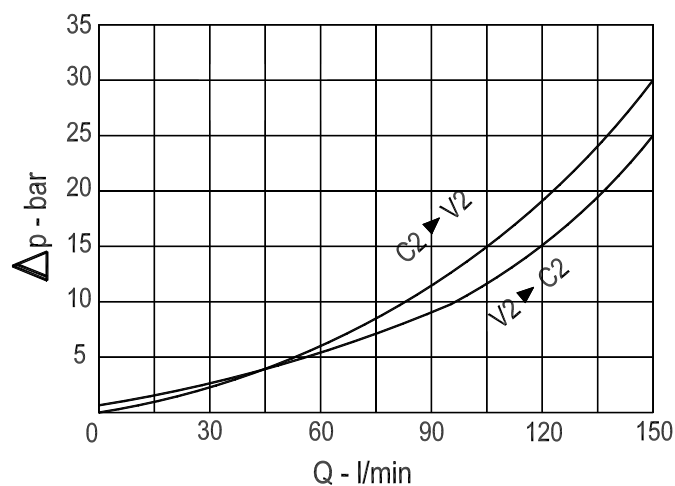
**Max. setting:** 350 bar

**Pilot ratio:** 1 : 4 (standard), 1 to 8 on request

**Adjustment means:** leakproof screw adjustment

**Adjustable pressure range:** see page 02

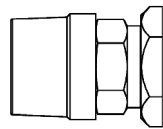
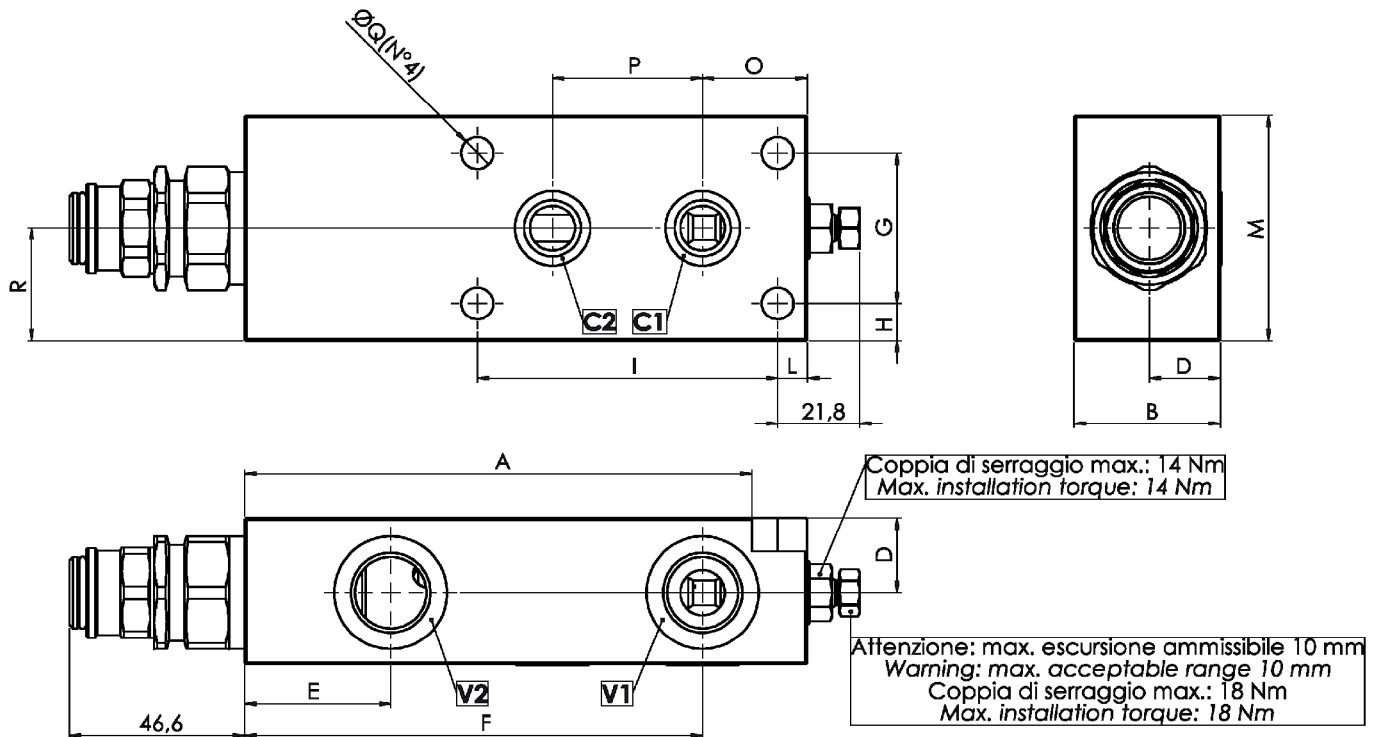
### DIAGRAMMA PERDITE DI CARICO PRESSURE DROP CURVES





**Valvola overcenter singola bilanciata, montaggio con C1, C2 flangiate e pilotaggio interno e regolabile**  
**Fully balanced single overcenter valve, gasket mounted: C1-C2 flanged, internal and adjustable pilot**

Rev.04-2022/08



Cappello antimanomissione.  
 Codice di ordinazione: 9006800020

Tamperproof cap.  
 Ordering code: 9006800020

MOLLE - SPRINGS				*
Codice Code	Rapp. pil. Pilot ratio	Campo taratura min.-max. bar Adjustable pressure range bar	Increment. press. bar/ giro vite Pressure increase bar/turn	Taratura standard bar Standard setting bar
35	1 : 4	100 - 350	110	280
35	1 : 8	150 - 350	104	280

TIPO TYPE	V1 V2	C1 C2	A	B	D	E	F	G	H	I	L	M	N	O	P	Q	R	PESO WEIGHT
	BSPP	mm	mm	mm	mm	mm	mm	mm	mm	mm	mm	mm	mm	mm	mm	mm	mm	Kg
FPOFB 150 S-1/2"-2F-P...	1/2"	12	150	39	30	39	122	40	10	80	8	60	65	28	40	8.5	30	2,500

**ESEMPIO DI ORDINAZIONE - ORDERING CODE EXAMPLE**

**F P O F B 1 5 0 S 1 / 2 2 F P 3 5 A P B \***

Guarniz./Seals:  
 Omettere se  
 BUNA-N \*  
 Omit if BUNA-N  
 V = Viton

Rapp. di pilotaggio  
 Pilot ratio  
 Omettere se standard \*  
 Omit if standard  
 B = 1 : 8