



Tipo / Type

**FPO-50-DF-D2-1/2-U-\*.\***

Sez./Section

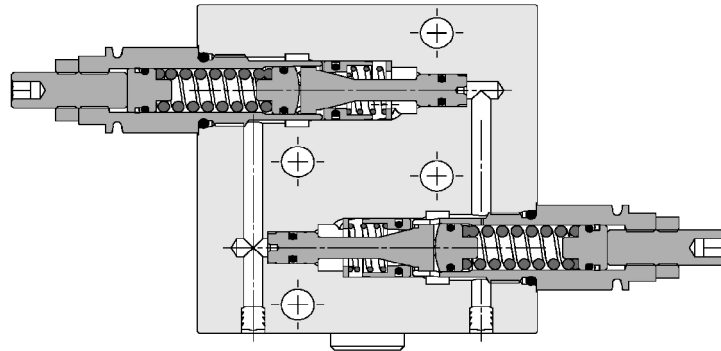
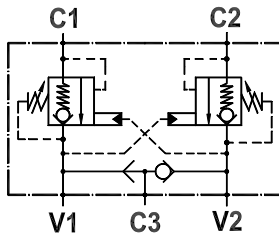
**Q**

Pag./Page

**315/1**

**Valvola overcenter doppia, flangiabile su motori Danfoss serie "OMP/R/H",  
con sblocco freno**  
**Dual overcenter valve, flangeable on Danfoss motors "OMP/R/H" series,  
brake release port**

Rev.05-2022/07



### SPECIFICHE TECNICHE

**Materiali:** cartucce in acciaio zincato, parti interne in acciaio trattato termicamente. Corpo in lega di alluminio.

**Portata max.:** fino a 50 l/min

**Taratura max.:** 350 bar

**Pressione max:** 250 bar

**Rapporto di pilotaggio:** 1 : 4.25 standard, a richiesta 1 : 8, 1 : 11

**Regolazione pressione:** mediante vite

**Campo di regolazione pressione:** vedere pag. 02

**Peso:** 1,500 Kg

### TECHNICAL SPECIFICATIONS

**Materials:** cartridges in steel zinc plated, internal parts in hardened steel. Body is in high strength aluminium alloy.

**Rated flow:** up to 50 l/min

**Max. setting:** 350 bar

**Max. pressure:** 250 bar

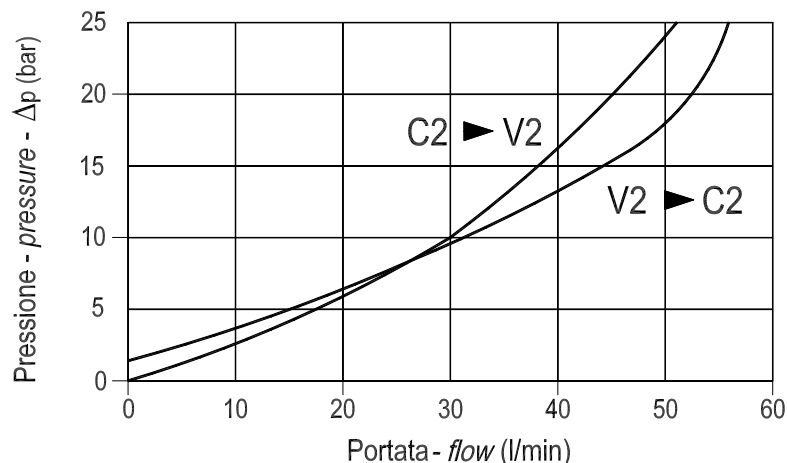
**Pilot ratio:** 1 : 4.25 std, 1 : 8 and 1 : 11 on request

**Adjustment means:** leakproof screw adjustment

**Adjustable pressure range:** see page 02

**Weight:** 1,500 Kg

### DIAGRAMMA PERDITE DI CARICO PRESSURE DROP CURVES





Tipo / Type

**FPO-50-DF-D2-1/2-U-\*.\***

Sez./Section

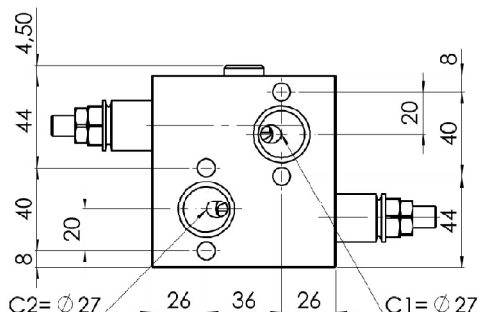
**Q**

Pag./Page

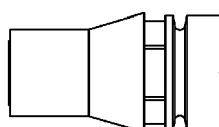
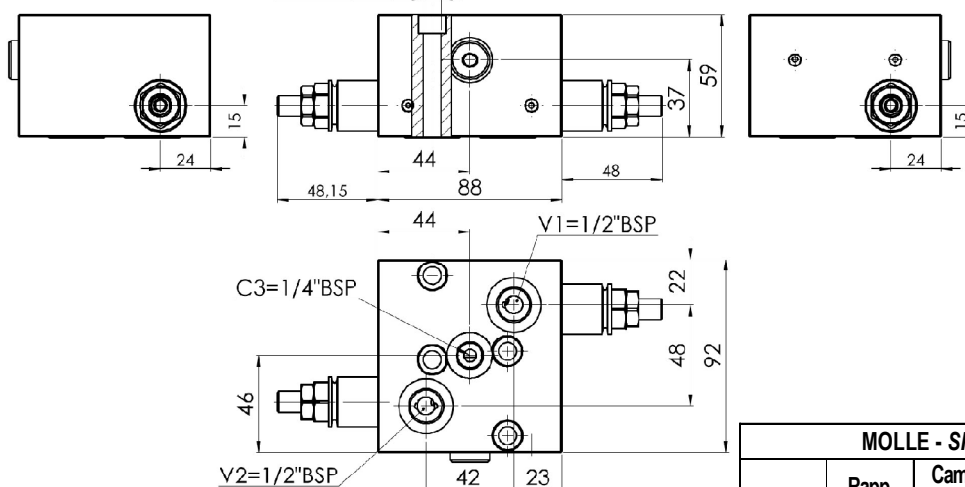
**315/2**

**Valvola overcenter doppia, flangiabile su motori Danfoss serie "OMP/R/H",  
con sblocco freno  
Dual overcenter valve, flangeable on Danfoss motors "OMP/R/H" series,  
brake release port**

Rev.05-2022/07



Ø 8.50 (n°4)



**Cappello antimanomissione.  
Codice di ordinazione: 9006800010**

**Tamperproof cap.  
Ordering code: 9006800010**

MOLLE - SPRINGS				*
Codice Code	Rapp. pil. Pilot ratio	Campo taratura min.-max. bar Adjustable pressure range bar	Increment. press. bar/ giro vite Pressure increase bar/turn	Taratura standard bar Standard setting bar
<b>20</b>	1 : 4.25	60 - 210	42	170
	1 : 8	60 - 220	50	
	1 : 11	60 - 250	70	
<b>35</b>	1 : 4.25	80 - 350	107	280
	1 : 8	100 - 350	78	
	1 : 11	80 - 350	109	

**ESEMPIO DI ORDINAZIONE - ORDERING CODE EXAMPLE**

**F P O 5 0 D F D 2 1 / 2 U 2 0 B**

\*  $\frac{20}{35}$  /  $\frac{25}{35}$

Campi di taratura pressione - Adjustable pressure range

Rapporto di pilotaggio  
Pilot ratio

Omettere se standard  
Omit if standard \*

B = 1 : 8, C = 1 : 11