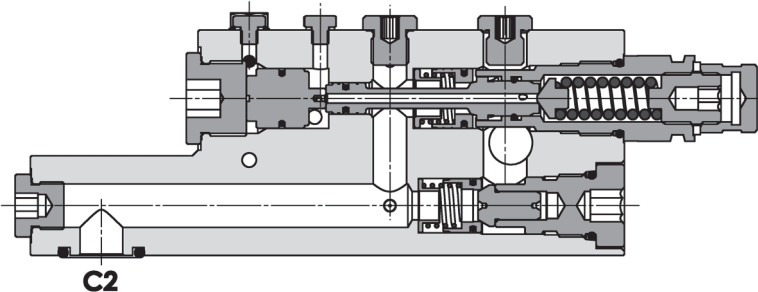
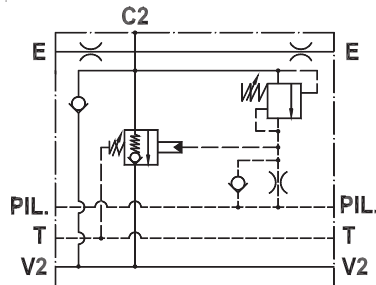




**Valvola di blocco e controllo portata per bracci, montaggio a flangia**  
**Flow check and metering valve for booms, gasket mounted**

Rev.03-2010/09



**SPECIFICHE TECNICHE**

**Materiali:** corpo in acciaio zincato. I componenti interni sono in acciaio trattato termicamente.

**Portata max.:** 250 l/min

**Pressione max.:** 420 bar

**Regolazione pressione:** mediante vite

**Campo di regolazione pressione:** vedere pag.02

**Peso:** 8.100 Kg

**TECHNICAL SPECIFICATIONS**

**Materials:** body is in steel zinc plated. Internal parts are in hardened steel.

**Rated flow:** up to 250 l/min

**Max. pressure:** 420 bar

**Adjustment means:** leakproof screw adjustment

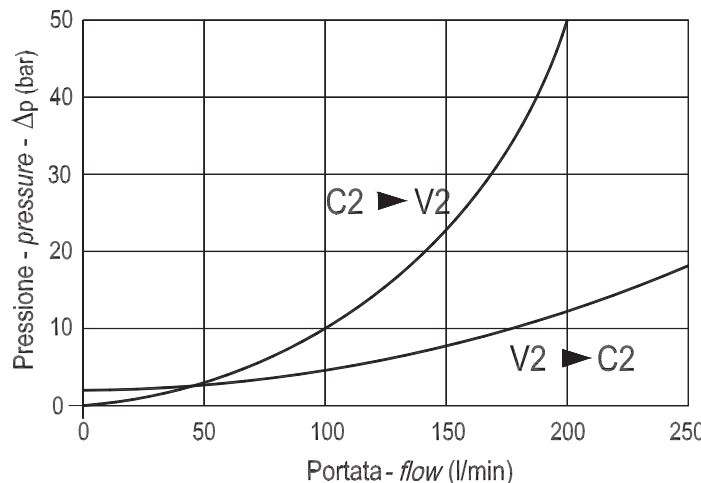
**Adjustable pressure range:** see page 02

**Weight:** 8.100 Kg

**DIAGRAMMA PERDITE DI CARICO - PRESSURE DROP CURVES**

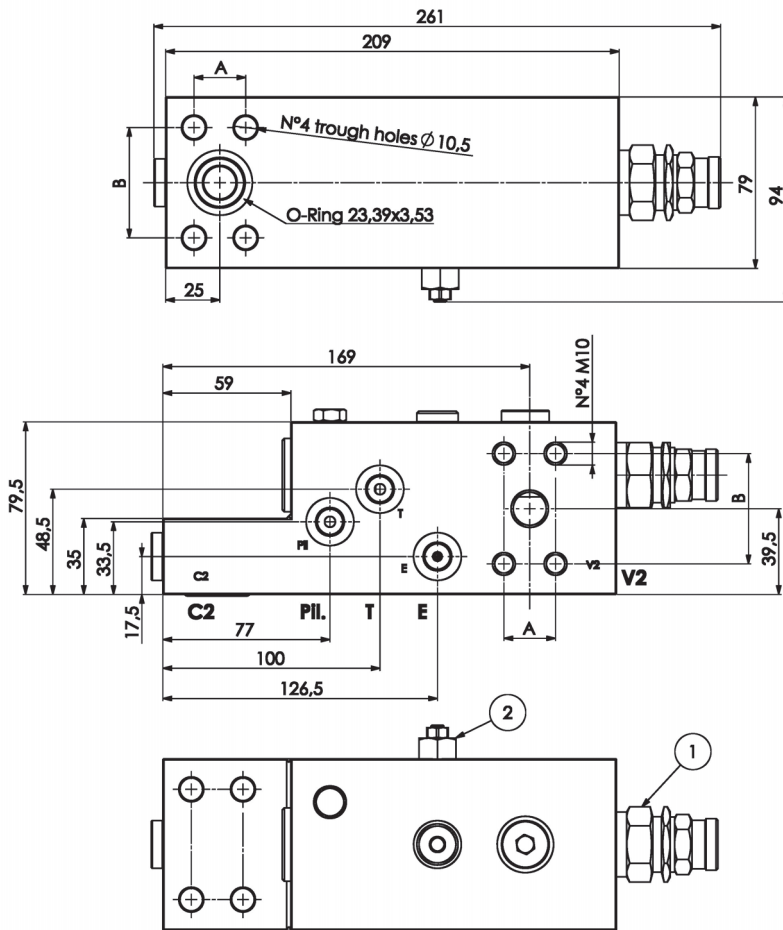
Viscosità olio 24 mm<sup>2</sup>/sec. (3,5 °E)  
 Temperatura 50 °C

Oil viscosity 24 mm<sup>2</sup>/sec. (3,5 °E)  
 Temperature 50 °C



**Valvola di blocco e controllo portata per bracci, montaggio a flangia**  
**Flow check and metering valve for booms, gasket mounted**

Rev.03-2010/09



MOLLE VALVOLA (1) - SPRINGS VALVE (1)			
Codice Code	Campo taratura min.-max. bar Adjustable pressure range bar	Increment. press. bar/giro vite Pressure increase bar/turn	Taratura standard bar Standard setting bar
<b>05</b>	3.5 - 19.5	3.5	7.5

MOLLE VALVOLA (2) - SPRINGS VALVE (2)			
Codice Code	Campo taratura min.-max. bar Adjustable pressure range bar	Increment. press. bar/giro vite Pressure increase bar/turn	Taratura standard bar Standard setting bar
<b>50</b>	250 - 500	198	350

TIPO TYPE	A	B	C2 - V2	E - PIL - T	PESO WEIGHT
	mm	mm	SAE	BSPP	Kg
FPEXC-250-S-3/4...SAE3000	22.2	47.6	3/4" SAE3000	1/4"	8.000
FPEXC-250-S-3/4...SAE6000	23.8	50.8	3/4" SAE6000	1/4"	8.000

**ESEMPIO DI ORDINAZIONE - ORDERING CODE EXAMPLE**

**F P E X C** **2 5 0** **S** **3 / 4** **1 F** **S A E 6 0 0 0** **0 5** **5 0**

SAE 6000  
 SAE 3000

Dimensione flangia - flange dimension