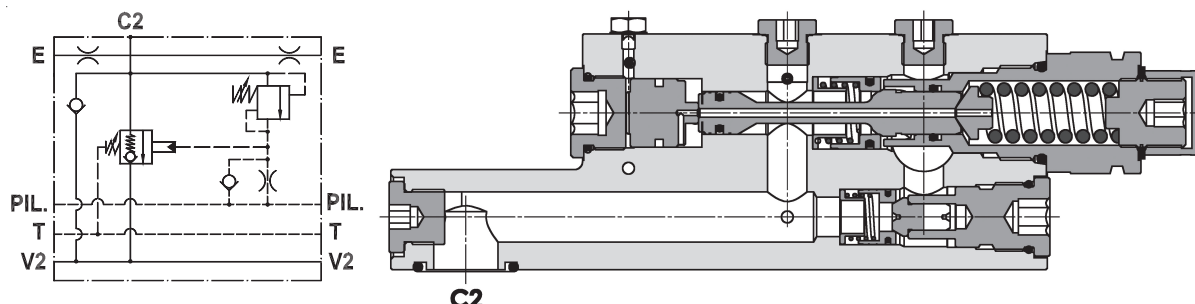


**Valvola di blocco e controllo portata per bracci, montaggio a flangia**  
**Flow check and metering valve for booms, gasket mounted**

Rev.02-2010/08



### SPECIFICHE TECNICHE

**Materiali:** corpo in acciaio zincato. I componenti interni sono in acciaio trattato termicamente.

**Portata max.:** 400 l/min

**Pressione max.:** 420 bar

**Regolazione pressione:** mediante vite

**Campo di regolazione pressione:** vedere pag.02

**Peso:** 12,150 Kg

### TECHNICAL SPECIFICATIONS

**Materials:** body is in steel zinc plated. Internal parts are in hardened steel.

**Rated flow:** up to 400 l/min

**Max. pressure:** 420 bar

**Adjustment means:** leakproof screw adjustment

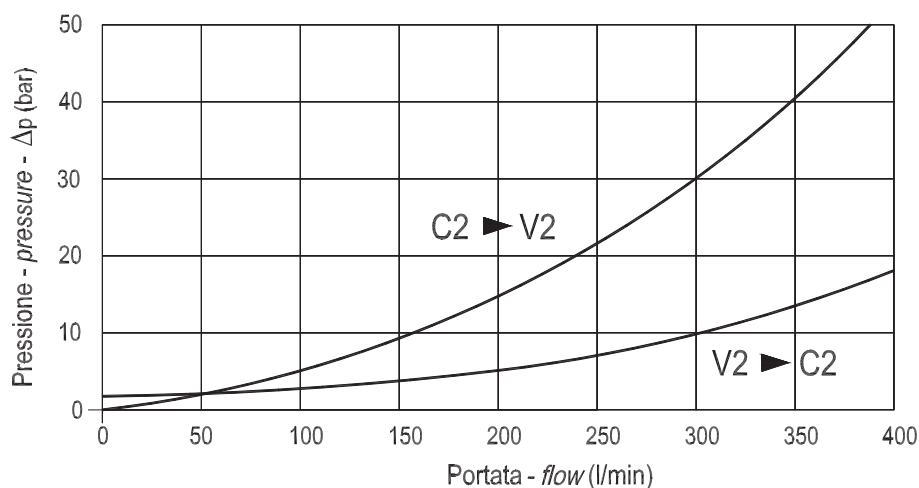
**Adjustable pressure range:** see page 02

**Weight:** 12,150 Kg

### DIAGRAMMA PERDITE DI CARICO - PRESSURE DROP CURVES

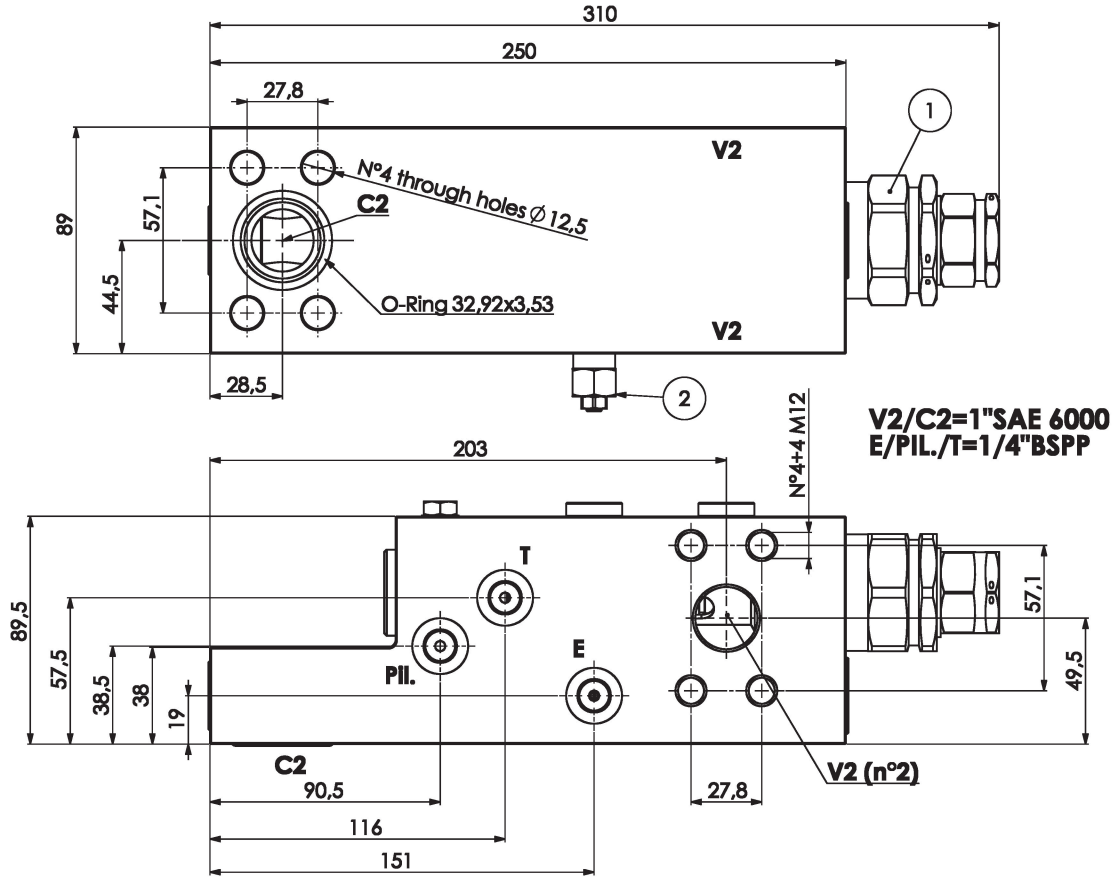
Viscosità olio 24 mm<sup>2</sup>/sec. (3,5 °E)  
 Temperatura 50 °C

Oil viscosity 24 mm<sup>2</sup>/sec. (3,5 °E)  
 Temperature 50 °C



**Valvola di blocco e controllo portata per bracci, montaggio a flangia**  
**Flow check and metering valve for booms, gasket mounted**

Rev.02-2010/08



MOLLA VALVOLA (1) - SPRING VALVE (1)			
Codice Code	Campo taratura min.-max. bar Adjustable pressure range bar	Increment. press. bar/giro vite Pressure increase bar/turn	Taratura standard bar Standard setting bar
05	3.5 - 24	5	7.5

MOLLA VALVOLA (2) - SPRING VALVE (2)			
Codice Code	Campo taratura min.-max. bar Adjustable pressure range bar	Increment. press. bar/giro vite Pressure increase bar/turn	Taratura standard bar Standard setting bar
50	250 - 500	198	350

**ESEMPIO DI ORDINAZIONE - ORDERING CODE EXAMPLE**

**F P E X C** **4 0 0** **S** **1** **1 F** **S A E 6 0 0 0** **0 5** **5 0**